

# ORION 850

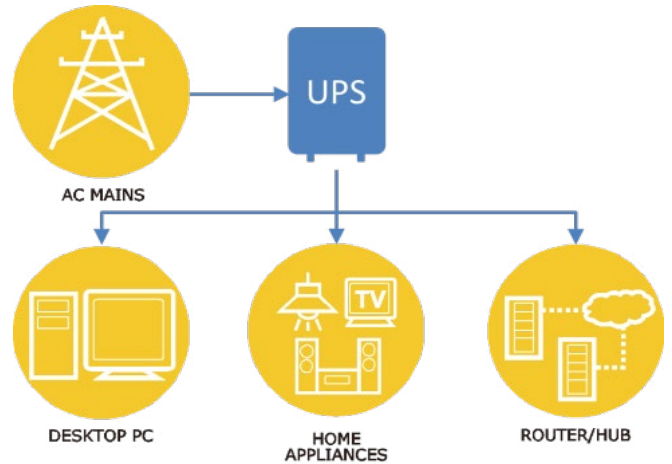


## Key features

- Build-in voltage regulator for reliable power quality
- Super fast charger shortens the charging time to 2-4 hours
- HID USB\* interface enables integration with built-in power management and auto shutdown features of Windows and Mac OS and Linux
- Multi outlet up to 8 pcs
- Support Surge protection
- Separated battery room and Support Battery easy replacement
- CE compliant

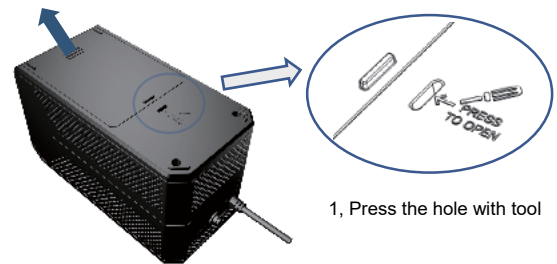


## Typical application



## Battery easy replacement

2, Open battery door



1, Press the hole with tool

**Note:** Follow manual for details and safety requirement.

# Product specification

MODEL		ORION 850
CAPACITY		850VA/480W
INPUT	Input Voltage Range	177-290 VAC
	Frequency Range	45-55Hz/55-65Hz
	Input connection	Fixed power cord with AU plug 1.2m
OUTPUT	Output Power Factor	0.56
	Nominal Output Voltage	240 VAC
	Voltage Regulation (Line Mode)	±15%
	Voltage Regulation (Battery Mode)	±10%
	Frequency Range (Battery Mode)	50/60Hz ± 1Hz
	Output Waveform	Modified sine wave
	Output socket	4 backup + 4 Surge protection only (AU)
EFFICIENCY	Line Mode	95%
	AVR Mode	88%
	Battery Mode	60%
BATTERY	Battery Type	12V/9Ah
	Number of Internal Battery	1
	Rated Battery Voltage	12VDC
	Backup Time (@ Typical PC load)	20 min
	Recharge Time (to 90%)	2-4 hours
TRANSFER TIME	Battery Mode ↔ Line Mode	3-8 ms typical
DISPLAY		LED
AUDIBLE ALARM		Yes
DIMENSION	WxHxD	125 x 150 x 254 mm
NET WEIGHT		5.4 kg
ENVIRONMENT	Operating Temperature	0-40°C
	Noise Level	<30dB
INTERFACE	USB	Yes-HID

